



**HAND CRAFTED  
LOG HOMES**

LEWIS CHAPPELL- PRES.  
BLAKE CHAPPELL - VP  
JACOB CHAPPELL - VP

◆  
**FIND US:**

9160 So. 300 West #24  
SANDY, UT 84070

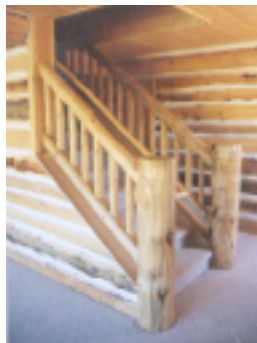
◆  
**CALL US:**

801-567-3767

◆  
**OR VISIT OUR WEBSITE AT**

[www.CHAPPELL-LOG-HOMES.com](http://www.CHAPPELL-LOG-HOMES.com)

AT CHAPPELL LOG HOMES  
WE ARE COMMITTED  
TO BUILDING QUALITY,  
LONG LASTING STRUCTURES.  
OUR UNIQUE BUILDING  
TECHNIQUES HELP TO  
ENSURE BETTER  
STRUCTURAL INTEGRITY  
AND GIVE OUR CUSTOMERS  
MANY MORE CHOICES IN  
INTERIOR FINISH THAN  
OTHER LOG HOME BUILDERS.  
WE USE HAND SELECTED  
LODGE-POLE PINE CUT AND  
HAULED TO THE SITE BY  
OUR OWN PROFESSIONALS  
AND CUSTOM HAND PEELED  
FASHIONED TO FIT YOUR  
DREAM HOME. DON'T SETTLE  
FOR JUST ANY  
RUN-OF-THE-MILL LOG HOME,  
CHOOSE THE RUSTIC BEAUTY  
AND APPEAL OF OUR  
UNIQUE CABINS.



**Y U K O N**

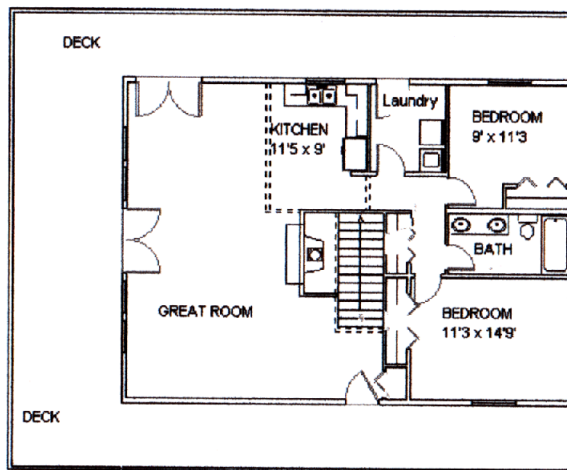
LOCATION: LOT 624 PINE  
MOUNTAIN ESTATES,  
WEBER CANYON, UT

A GREAT DESIGN, GOOD  
FOR SMALL FAMILIES.  
3 BEDROOMS, 2 BATHS,  
WOOD FLOORS, TILE  
BATHROOMS AND KITCHEN,  
BEAUTIFUL GREAT ROOM  
WITH FIREPLACE, A SPACIOUS  
LOFT, LOG RAILINGS, MASTER  
SUITE WITH BALCONY AND  
JETTED TUB, 1 CAR GARAGE  
AND SPACE FOR SNOW  
MACHINES. FEATURES  
BEAUTIFUL PINE INTERIOR  
AND WRAP AROUND DECKS.

MAIN FLOOR 1,673 SQ FT  
SECOND FLOOR 1,011 SQ FT  
TOTAL AREA 2,800 SQ FT

CALL FOR PRICES

**FIRST FLOOR**



**SECOND FLOOR**

