



**HAND CRAFTED
LOG HOMES**

LEWIS CHAPPELL- PRES.
BLAKE CHAPPELL - VP
JACOB CHAPPELL - VP

◆
FIND US:

9160 So. 300 West #24
SANDY, UT 84070

◆
CALL US:

801-567-3767

◆
OR VISIT OUR WEBSITE AT
www.CHAPPELL-LOG-HOMES.COM

AT CHAPPELL LOG HOMES
WE ARE COMMITTED
TO BUILDING QUALITY,
LONG LASTING STRUCTURES.
OUR UNIQUE BUILDING
TECHNIQUES HELP TO
ENSURE BETTER
STRUCTURAL INTEGRITY
AND GIVE OUR CUSTOMERS
MANY MORE CHOICES IN
INTERIOR FINISH THAN
OTHER LOG HOME BUILDERS.
WE USE HAND SELECTED
LODGE-POLE PINE CUT AND
HAULED TO THE SITE BY
OUR OWN PROFESSIONALS
AND CUSTOM HAND PEELED
FASHIONED TO FIT YOUR
DREAM HOME. DON'T SETTLE
FOR JUST ANY
RUN-OF-THE-MILL LOG HOME,
CHOOSE THE RUSTIC BEAUTY
AND APPEAL OF OUR
UNIQUE CABINS.

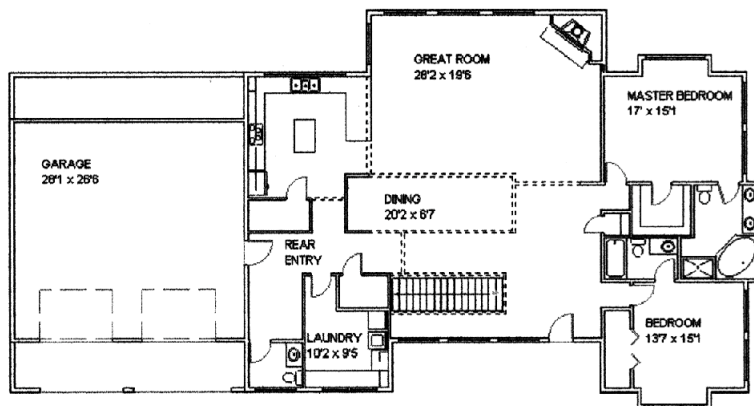


L E W I S & C L A R K

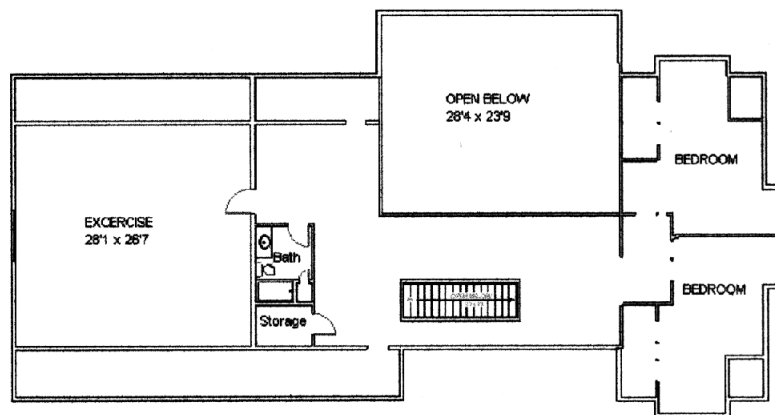
OWNER: LEWIS CHAPPELL
LOCATION: LOT 3, LAKE
CREEK ESTATES
HEBER CITY, UTAH
COMPLETED: AUG. 1999

THIS CUSTOM CABIN HAS
4 BEDROOMS, 3 _ BATHS,
A LARGE GREAT ROOM WITH
A RIVER ROCK FIREPLACE,
LOFT, FAMILY ROOM, FRONT
AND BACK DECKS AND 2
CAR GARAGE. THE CABIN
FEATURES A FULL MASTER
BATH WITH JETTED TUB
AND SHOWER, WALK IN
CLOSET IN MASTER SUITE,
FULL BATH IN GUEST ROOM,
OFFICE AREA IN THE LOFT
AND COMMERCIAL SIZE
KITCHEN. THE HOME SITS
ON A 1 ACRE LOT WITH A
BEAUTIFUL VIEW OF
MT. TIMPANOGOS.

FIRST FLOOR



SECOND FLOOR



MAIN FLOOR 2,883 SQ FT
SECOND FLOOR 3,042 SQ FT
TOTAL AREA 5,925 SQ FT

CALL FOR PRICES