



**HAND CRAFTED
LOG HOMES**

LEWIS CHAPPELL- PRES.
BLAKE CHAPPELL - VP
JACOB CHAPPELL - VP

FIND US:

9160 So. 300 West #24
SANDY, UT 84070

CALL US:

801-567-3767

OR VISIT OUR WEBSITE AT
www.CHAPPELL-LOG-HOMES.com

AT CHAPPELL LOG HOMES
WE ARE COMMITTED
TO BUILDING QUALITY,
LONG LASTING STRUCTURES.
OUR UNIQUE BUILDING
TECHNIQUES HELP TO
ENSURE BETTER
STRUCTURAL INTEGRITY
AND GIVE OUR CUSTOMERS
MANY MORE CHOICES IN
INTERIOR FINISH THAN
OTHER LOG HOME BUILDERS.
WE USE HAND SELECTED
LODGE-POLE PINE CUT AND
HAULED TO THE SITE BY
OUR OWN PROFESSIONALS
AND CUSTOM HAND PEELLED
FASHIONED TO FIT YOUR
DREAM HOME. DON'T SETTLE
FOR JUST ANY
RUN-OF-THE-MILL LOG HOME,
CHOOSE THE RUSTIC BEAUTY
AND APPEAL OF OUR
UNIQUE CABINS.



H U D S O N

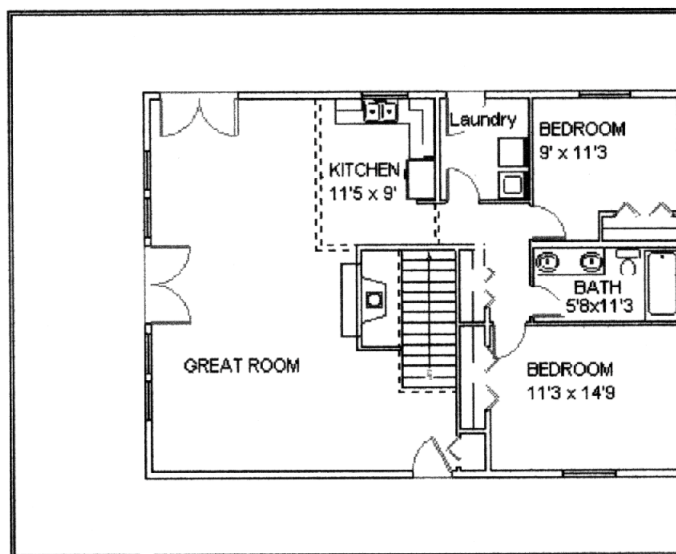
OWNER: PACKARD
LOCATION: LOT 619, PINE
MOUNTAIN ESTATES,
WEBER CANYON, UTAH
COMPLETED: JUNE 1998

THE CABIN SITS ON A
SPACIOUS 2/3 ACRE LOT
WITH A GREAT VIEW OF
THE VALLEY. IT FEATURES
3 BEDROOMS, AN
EXTENDED LOFT,
2 1/2 BATHS AND JETTED
TUB WITH SHOWING IN
THE MASTER BATH.
OTHER FEATURES INCLUDE
2 FIREPLACES, LOG
STAIRWAY WITH CUSTOM
HANDRAIL, LARGE
PARTIALLY COVERED
WRAP AROUND DECK,
AND A GARAGE FOR SNOW
MACHINES AND ATVs.

MAIN FLOOR 1,673 SQ FT
SECOND FLOOR 1,011 SQ FT
TOTAL AREA 3,000 SQ FT

CALL FOR PRICES

FIRST FLOOR



SECOND FLOOR

