



**HAND CRAFTED
LOG HOMES**

LEWIS CHAPPELL- PRES.
BLAKE CHAPPELL - VP
JACOB CHAPPELL - VP

◆
FIND US:

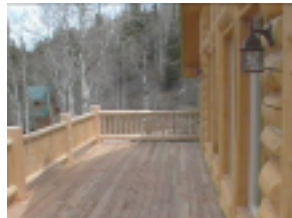
9160 So. 300 West #24
SANDY, UT 84070

◆
CALL US:

801-567-3767

◆
OR VISIT OUR WEBSITE AT
www.CHAPPELL-LOG-HOMES.com

AT CHAPPELL LOG HOMES
WE ARE COMMITTED
TO BUILDING QUALITY,
LONG LASTING STRUCTURES.
OUR UNIQUE BUILDING
TECHNIQUES HELP TO
ENSURE BETTER
STRUCTURAL INTEGRITY
AND GIVE OUR CUSTOMERS
MANY MORE CHOICES IN
INTERIOR FINISH THAN
OTHER LOG HOME BUILDERS.
WE USE HAND SELECTED
LODGE-POLE PINE CUT AND
HAULED TO THE SITE BY
OUR OWN PROFESSIONALS
AND CUSTOM HAND PEELED
FASHIONED TO FIT YOUR
DREAM HOME. DON'T SETTLE
FOR JUST ANY
RUN-OF-THE-MILL LOG HOME,
CHOOSE THE RUSTIC BEAUTY
AND APPEAL OF OUR
UNIQUE CABINS.



A U R O R A

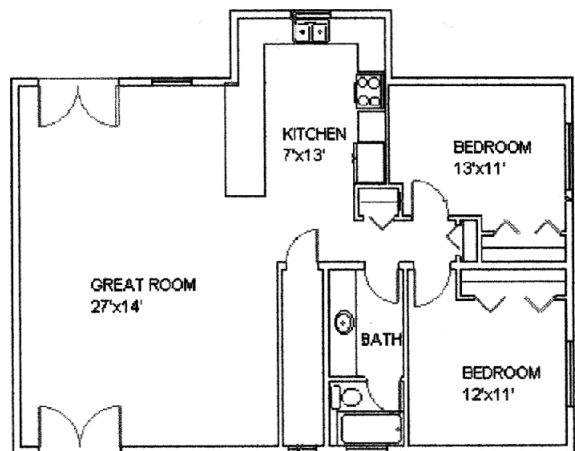
LOCATION: LOT 786 PINE
MOUNTAIN ESTATES,
WEBER CANYON, UT

A GREAT DESIGN, GOOD
FOR SMALL FAMILIES. 3
BEDROOMS, 2 BATHS,
WOOD FLOORS, TILE
BATHROOMS AND KITCHEN,
GREAT ROOM, LOG RAILINGS,
MASTER SUITE WITH BALCONY,
JETTED TUB, 1 CAR GARAGE
AND SPACE FOR SNOW
MACHINES, INTERIOR FINISHED
IN BEAUTIFUL WOOD, WRAP
AROUND DECKS.

MAIN FLOOR 1,236 SQ FT
SECOND FLOOR 691 SQ FT
TOTAL AREA 1,927 SQ FT

CALL FOR PRICES

FIRST FLOOR



SECOND FLOOR

